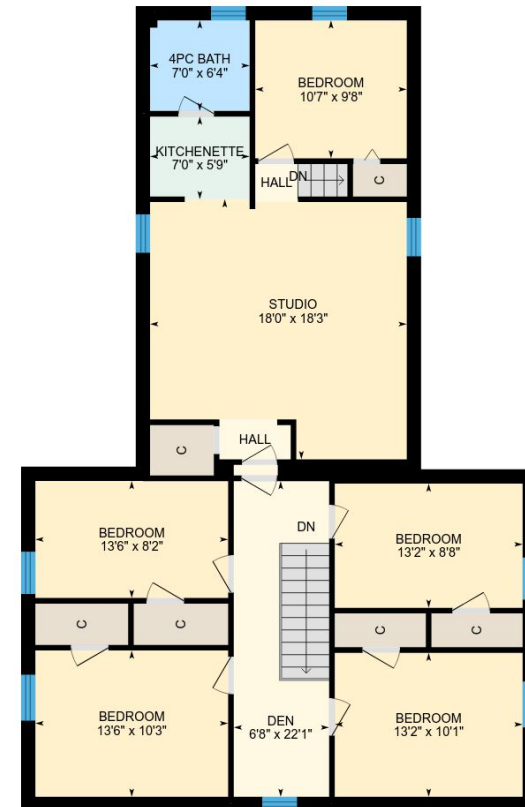


# 607366 Side Rd 33, The Blue Mountains, ON

Main Building: Total Exterior Area Above Grade 3767 sq ft



**Main Floor**  
Exterior Area 2254 sq ft



**2nd Floor**  
Exterior Area 1514 sq ft



0 6 12  
ft

607366 Side Rd 33, The Blue Mountains, ON

Main Floor    Total Exterior Area 2254 sq ft  
Total Interior Area 2020 sq ft



0 4 8 ft

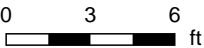
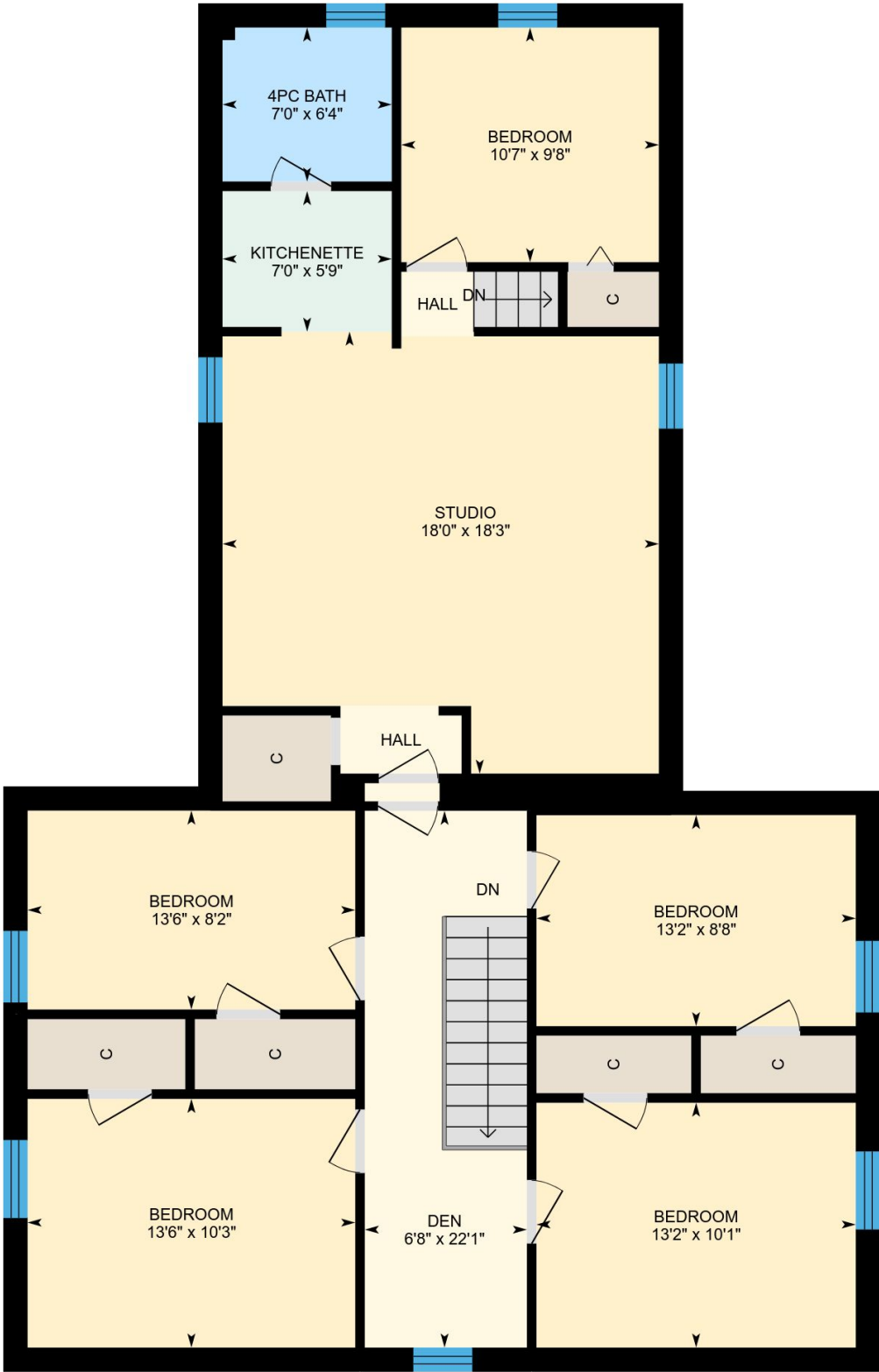
PREPARED: Nov, 2018



White regions are excluded from total floor area. All room dimensions and floor areas must be considered approximate and are subject to independent verification. For method of measurement please see <https://youriguide.com/measure/>.

607366 Side Rd 33, The Blue Mountains, ON

2nd Floor    Total Exterior Area 1514 sq ft  
Total Interior Area 1333 sq ft



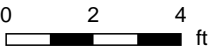
PREPARED: Nov, 2018



White regions are excluded from total floor area. All room dimensions and floor areas must be considered approximate and are subject to independent verification. For method of measurement please see <https://youriguide.com/measure/>.

607366 Side Rd 33, The Blue Mountains, ON

Office Total Interior Area 712 sq ft

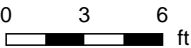
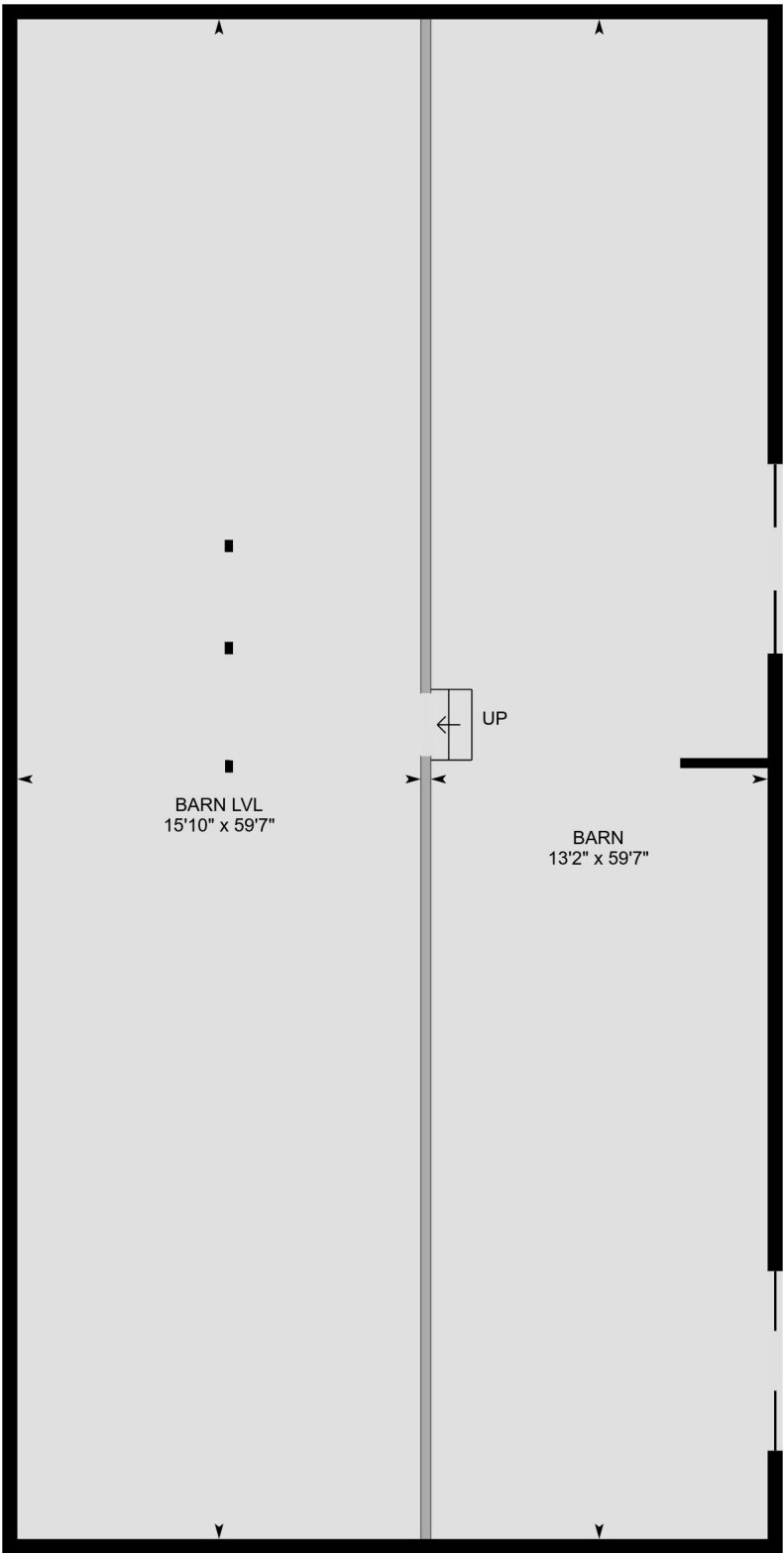


PREPARED: Nov, 2018



607366 Side Rd 33, The Blue Mountains, ON

Barn 1    Total Interior Area 1752 sq ft



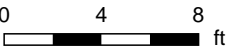
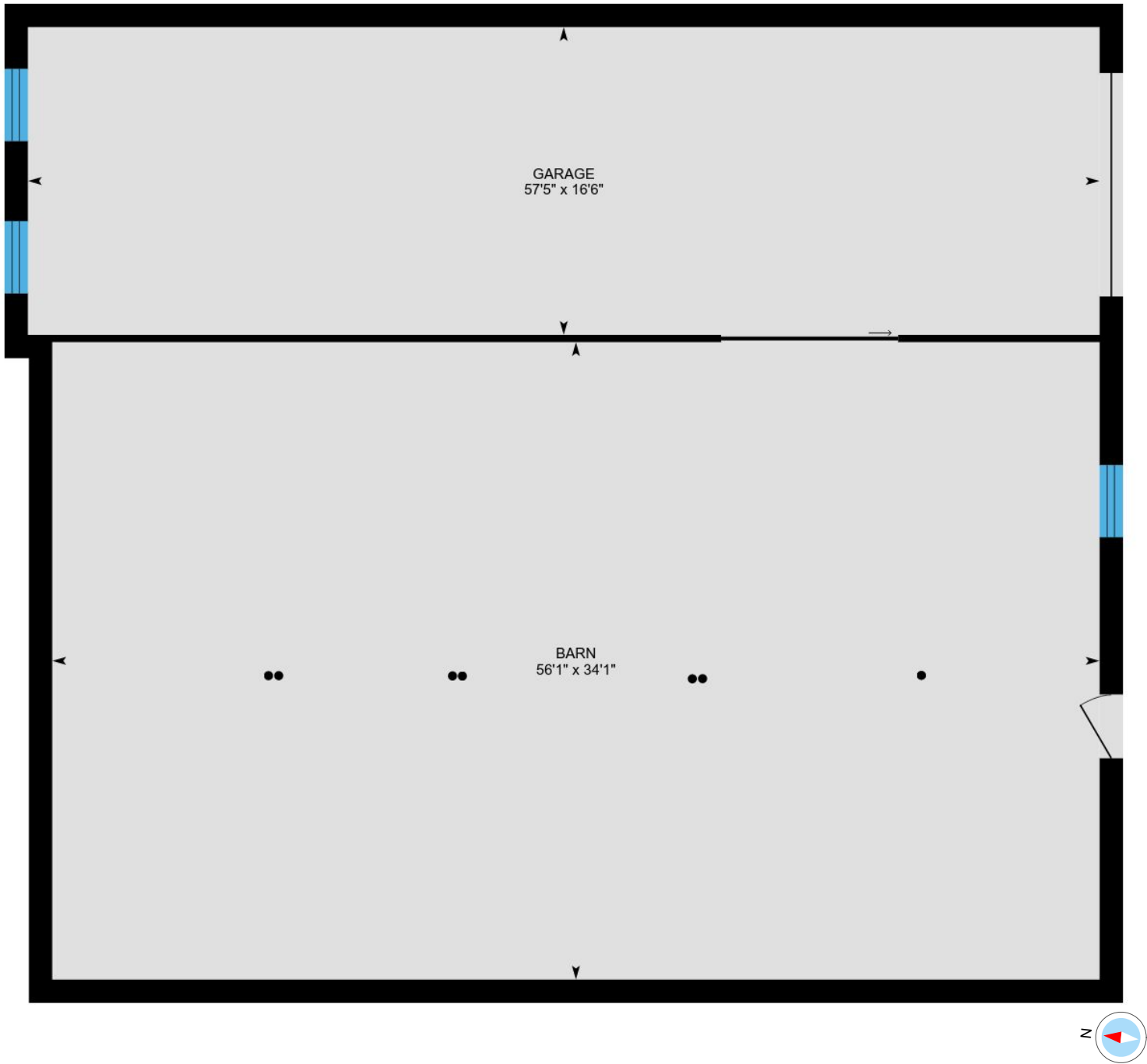
PREPARED: Nov, 2018



White regions are excluded from total floor area. All room dimensions and floor areas must be considered approximate and are subject to independent verification. For method of measurement please see <https://youriguide.com/measure/>.

607366 Side Rd 33, The Blue Mountains, ON

Barn 2    Total Exterior Area 3157 sq ft  
Total Interior Area 2880 sq ft



PREPARED: Nov, 2018

## Property Details

### Room Measurements

Only major rooms are listed. Some listed rooms may be excluded from total interior floor area (e.g. garage). Room dimensions are largest length and width; parts of room may be smaller. Room area is not always equal to product of length and width.

### Main Building

#### MAIN FLOOR

Living: 12'8" x 21'5"  
Breakfast: 10'5" x 16'10"  
Office: 7'7" x 17'11"  
4pc Bath: 7'3" x 7'9"  
Family: 11'11" x 15'0"  
Ensuite: 4'7" x 2'7"  
Utility: 4'4" x 3'0"  
Den: 10'6" x 10'8"  
Mudroom: 7'1" x 14'2"  
Dining: 19'1" x 15'4"  
Bedroom: 12'10" x 18'6"  
Kitchen: 12'8" x 12'2"

#### 2ND FLOOR

Den: 6'8" x 22'1"  
Bedroom: 13'6" x 10'3"  
Bedroom: 13'6" x 8'2"  
Kitchenette: 7'0" x 5'9"  
4pc Bath: 7'0" x 6'4"  
Bedroom: 10'7" x 9'8"  
Bedroom: 13'2" x 10'1"  
Bedroom: 13'2" x 8'8"  
Studio: 18'0" x 18'3"

### Office

#### OFFICE

Reception: 11'4" x 18'0"  
Office: 11'10" x 15'5"  
2pc Bath: 4'0" x 4'10"  
Office: 10'1" x 12'9"  
Storage: 10'0" x 5'1"  
Office: 10'0" x 10'0"

### Barn 1

#### BARN 1

Barn: 13'2" x 59'7"  
Barn Lvl: 15'10" x 59'7"

### Floor Area Information

For explanation of floor area calculations and method of measurement please see <http://youriguide.com/measure/>

### Main Building

Building Perimeter Wall Thickness: 12 in

#### MAIN FLOOR

Interior Area: 2020 sq ft  
Perimeter Wall Length: 233 ft  
Exterior Area: 2254 sq ft

#### 2ND FLOOR

Interior Area: 1333 sq ft  
Perimeter Wall Length: 181 ft  
Exterior Area: 1514 sq ft

### Office

#### OFFICE

Interior Area: 712 sq ft  
Perimeter Wall Length: 115 ft

### Barn 1

#### BARN 1

Interior Area: 1752 sq ft  
Perimeter Wall Length: 180 ft

### Barn 2

#### BARN 2

Interior Area: 2880 sq ft  
Perimeter Wall Length: 222 ft  
Perimeter Wall Thickness: 15 in  
Exterior Area: 3157 sq ft

### Total Above Grade Floor Area

Main Building Interior: 3353 sq ft

**Main Building Exterior: 3767 sq ft**

Office Interior: 712 sq ft

# 607366 Side Rd 33, The Blue Mountains, ON

---

## Room Measurements

Only major rooms are listed. Some listed rooms may be excluded from total interior floor area (e.g. garage). Room dimensions are largest length and width; parts of room may be smaller. Room area is not always equal to product of length and width.

### Barn 2

BARN 2

Barn: 56'1" x 34'1"

Garage: 57'5" x 16'6"

## Floor Area Information

For explanation of floor area calculations and method of measurement please see <http://youriguide.com/measure/>

Barn 1 Interior: 1752 sq ft

Barn 2 Interior: 2880 sq ft

**Barn 2 Exterior: 3157 sq ft**