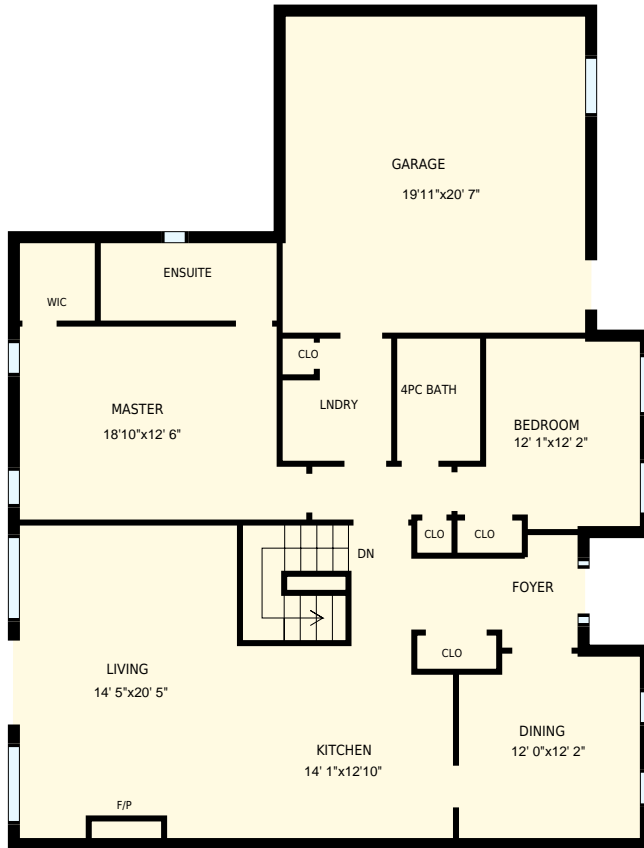




Foxfire Model, Lora Bay, The Blue Mountains

Total Exterior Area Above Grade 1983 sq ft



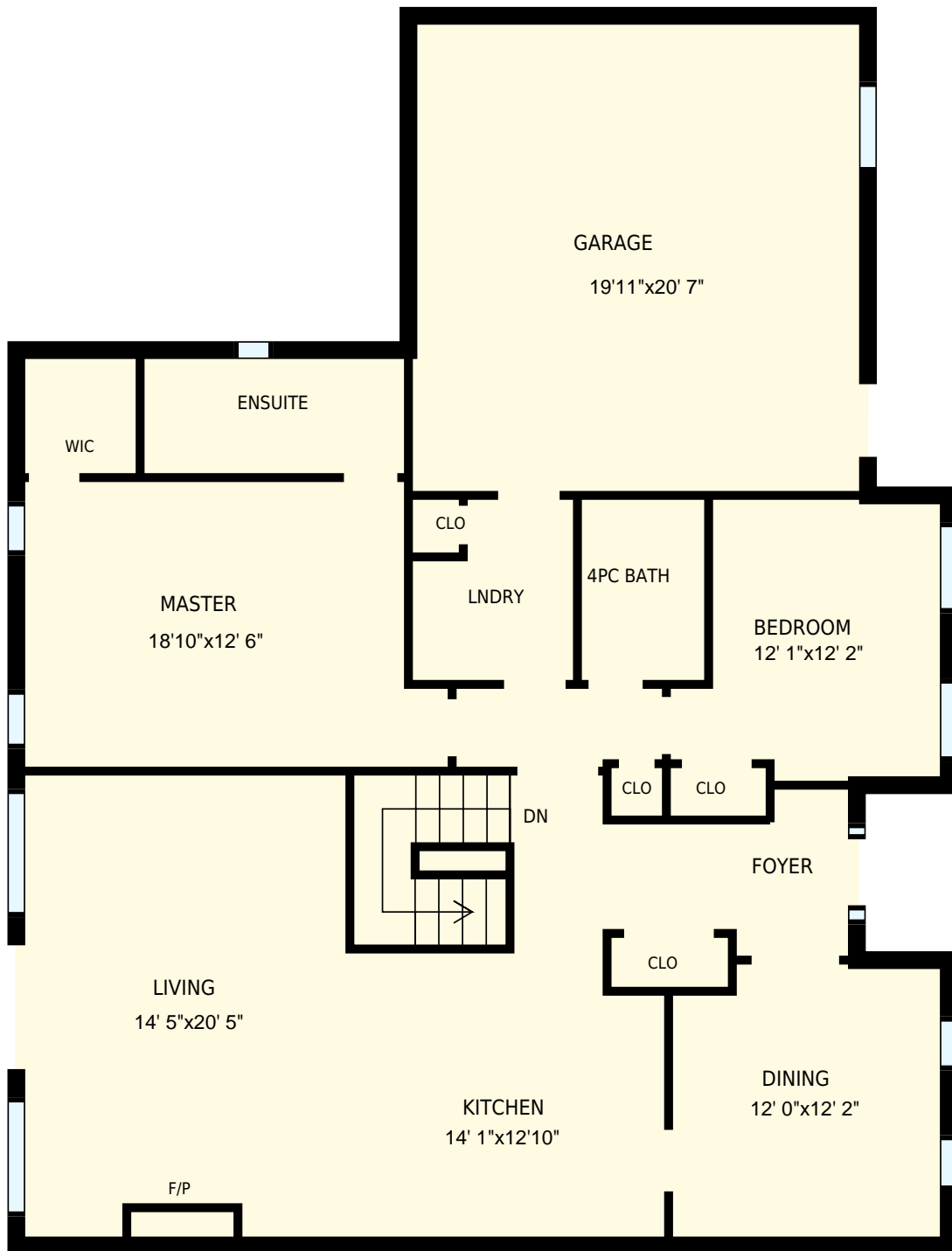
Main Floor
Exterior Area 1983 sq ft



Basement
Exterior Area 1426 sq ft

White regions are excluded from total floor area. All room dimensions and floor areas must be considered approximate and are subject to independent verification. For method of measurement please see <https://youriguide.com/measure/>.

PREPARED FOR: Steve and Marla Simon
Sales Representatives
Royal LePage Locations North Brokerage

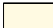


Foxfire Model, Lora Bay, The Blue Mountains

PREPARED FOR:
Steve and Marla Simon
Sales Representatives
Royal LePage Locations North Brokerage

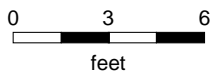
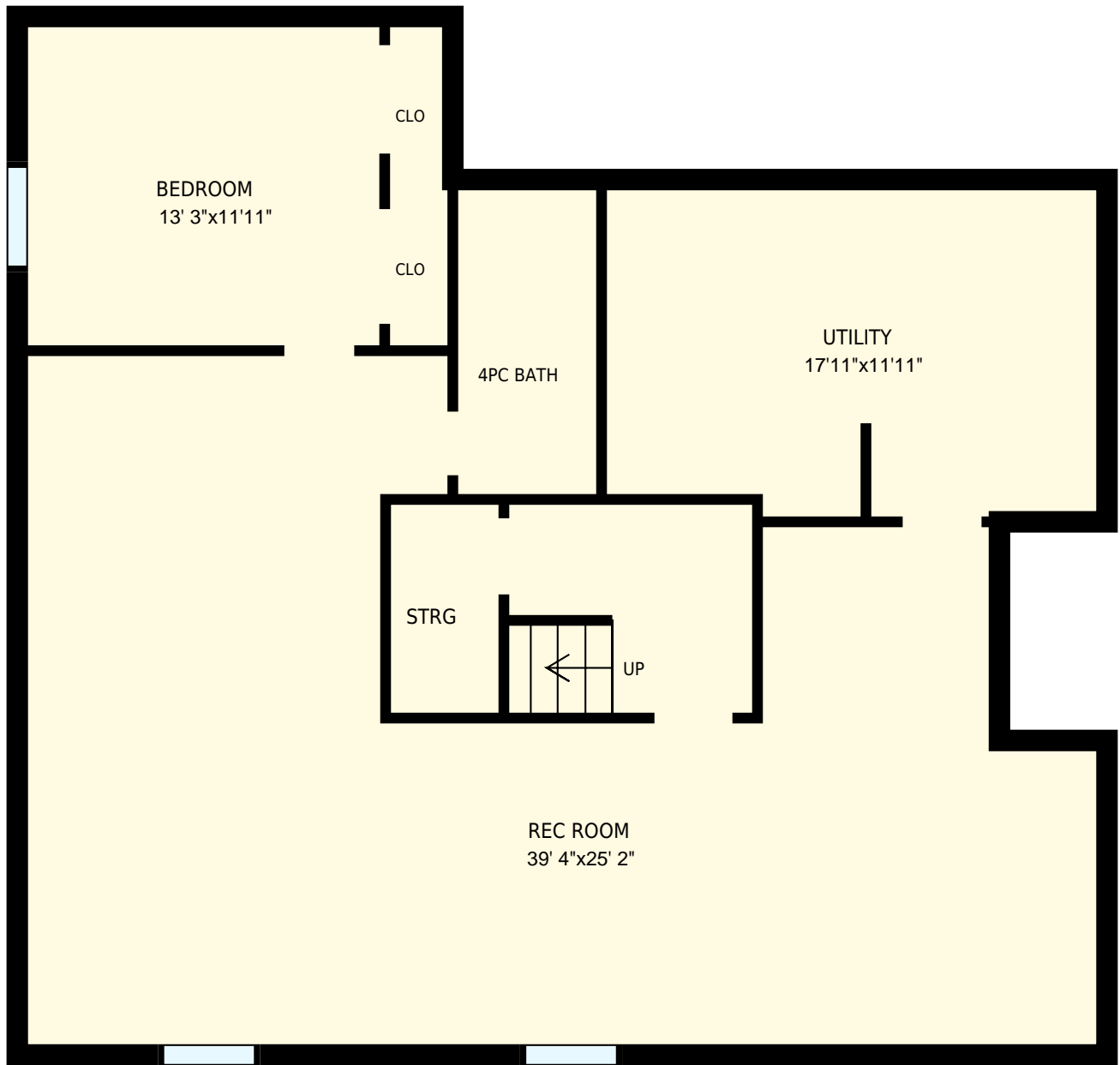
Main Floor

Interior Area 1852 sq ft
Exterior Area 1983 sq ft

 Included Area

PREPARED:
Sep, 2016

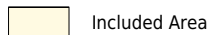
White regions are excluded from total floor area. All room dimensions and floor areas must be considered approximate and are subject to independent verification. For method of measurement please see <https://youriguide.com/measure/>.



Foxfire Model, Lora Bay, The Blue Mountains
Basement

PREPARED FOR:
 Steve and Marla Simon
 Sales Representatives
 Royal LePage Locations North Brokerage

Interior Area 1320 sq ft
 Exterior Area 1426 sq ft



PREPARED:
 Sep, 2016

White regions are excluded from total floor area. All room dimensions and floor areas must be considered approximate and are subject to independent verification. For method of measurement please see <https://youriguide.com/measure/>.