

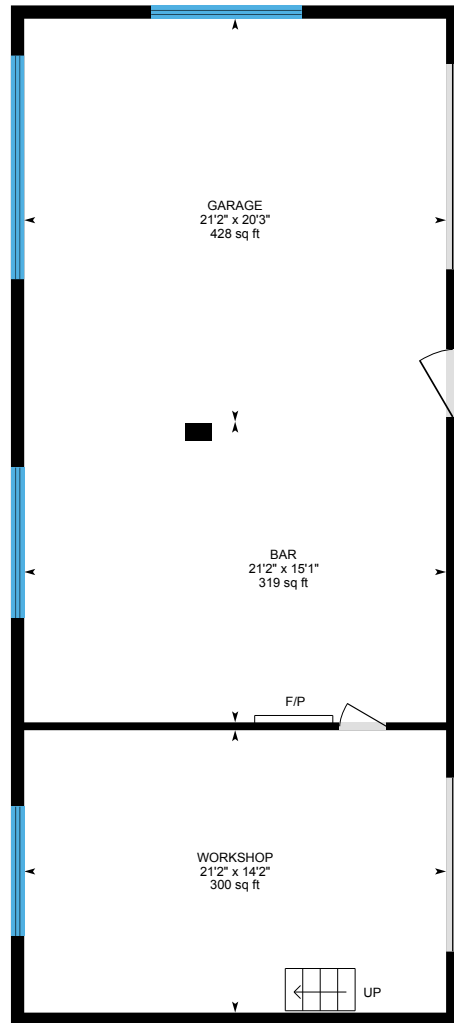
208697 ON-26, The Blue Mountains, ON

Main Building: Total Exterior Area Above Grade 1828 sq ft

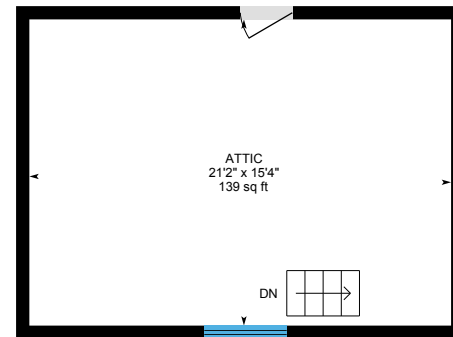


208697 ON-26, The Blue Mountains, ON

Garage



Barn



Garage bunky

0 4 8 ft

208697 ON-26, The Blue Mountains, ON

1st Floor Total Exterior Area 977 sq ft
Total Interior Area 868 sq ft



0 3 6 ft

PREPARED: Nov, 2019

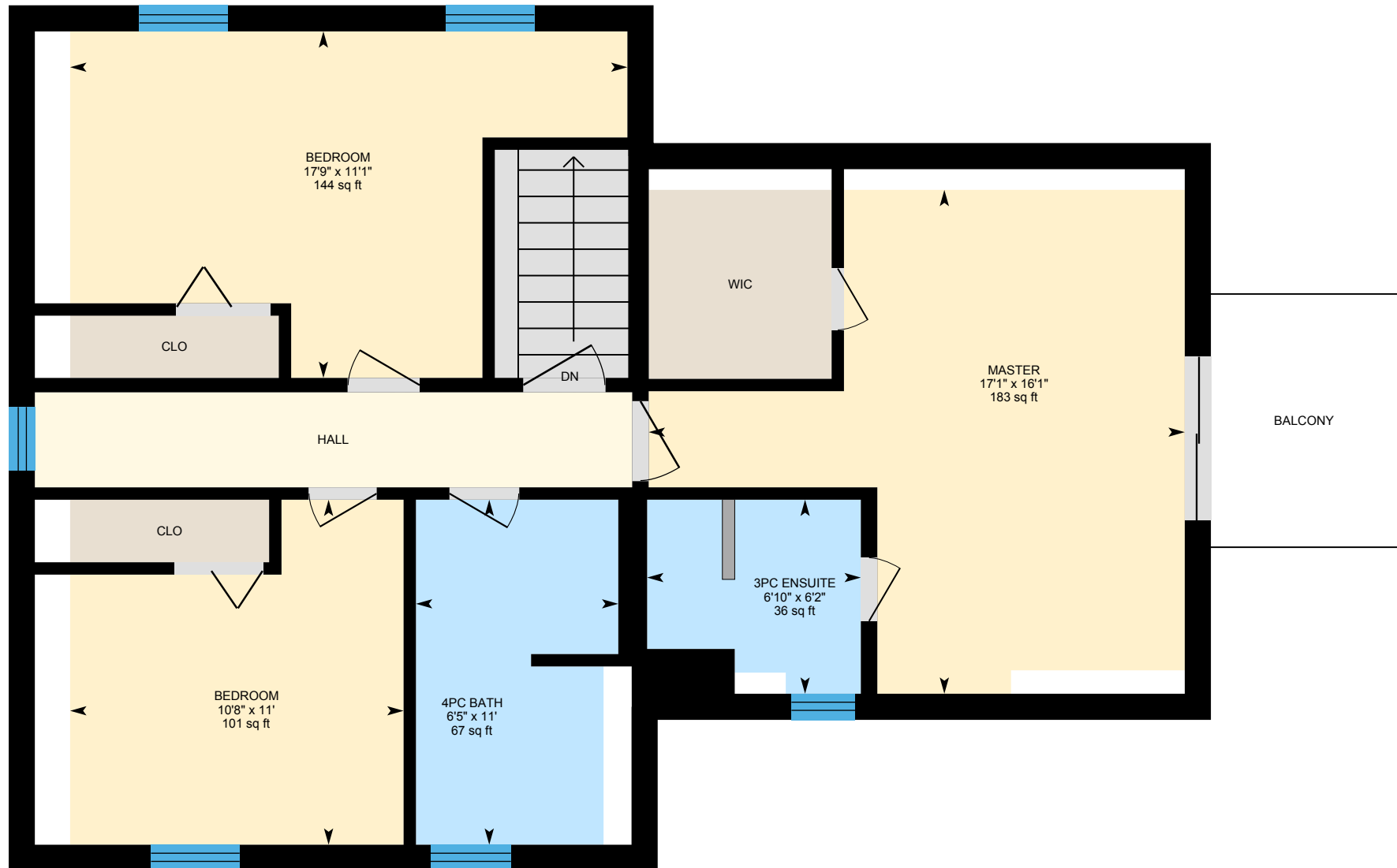


White regions are excluded from total floor area. All room dimensions and floor areas must be considered approximate and are subject to independent verification. For method of measurement please see <https://youriguide.com/measure/>.

iGUIDE

208697 ON-26, The Blue Mountains, ON

2nd Floor Total Exterior Area 850 sq ft
Total Interior Area 739 sq ft



0 4 8 ft

PREPARED: Nov, 2019



White regions are excluded from total floor area. All room dimensions and floor areas must be considered approximate and are subject to independent verification. For method of measurement please see <https://youriguide.com/measure/>.

iGUIDE

208697 ON-26, The Blue Mountains, ON

Lower level Total Exterior Area 838 sq ft
Total Interior Area 734 sq ft



0 3 6
ft

PREPARED: Nov, 2019

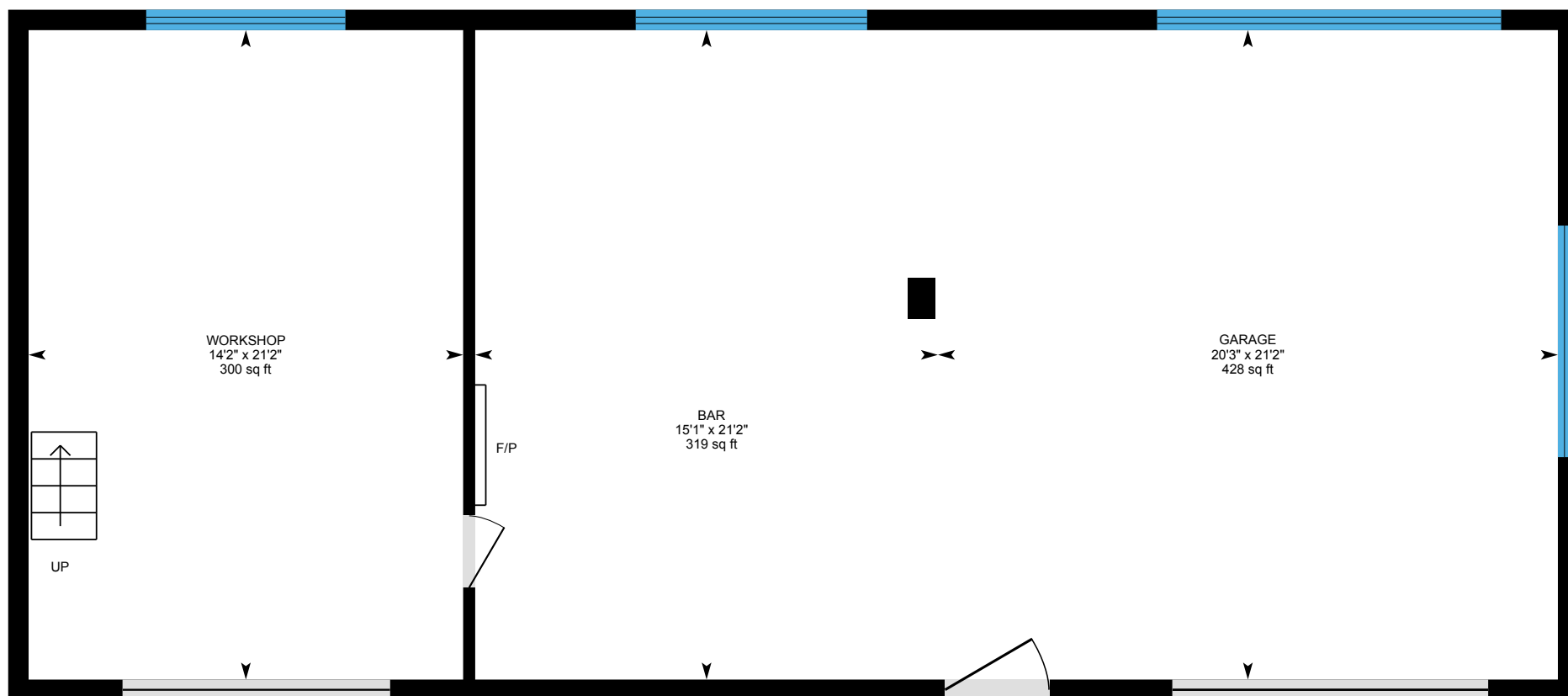


White regions are excluded from total floor area. All room dimensions and floor areas must be considered approximate and are subject to independent verification. For method of measurement please see <https://youriguide.com/measure/>.

iGUIDE

208697 ON-26, The Blue Mountains, ON

Barn



0 4 8 ft

PREPARED: Nov, 2019

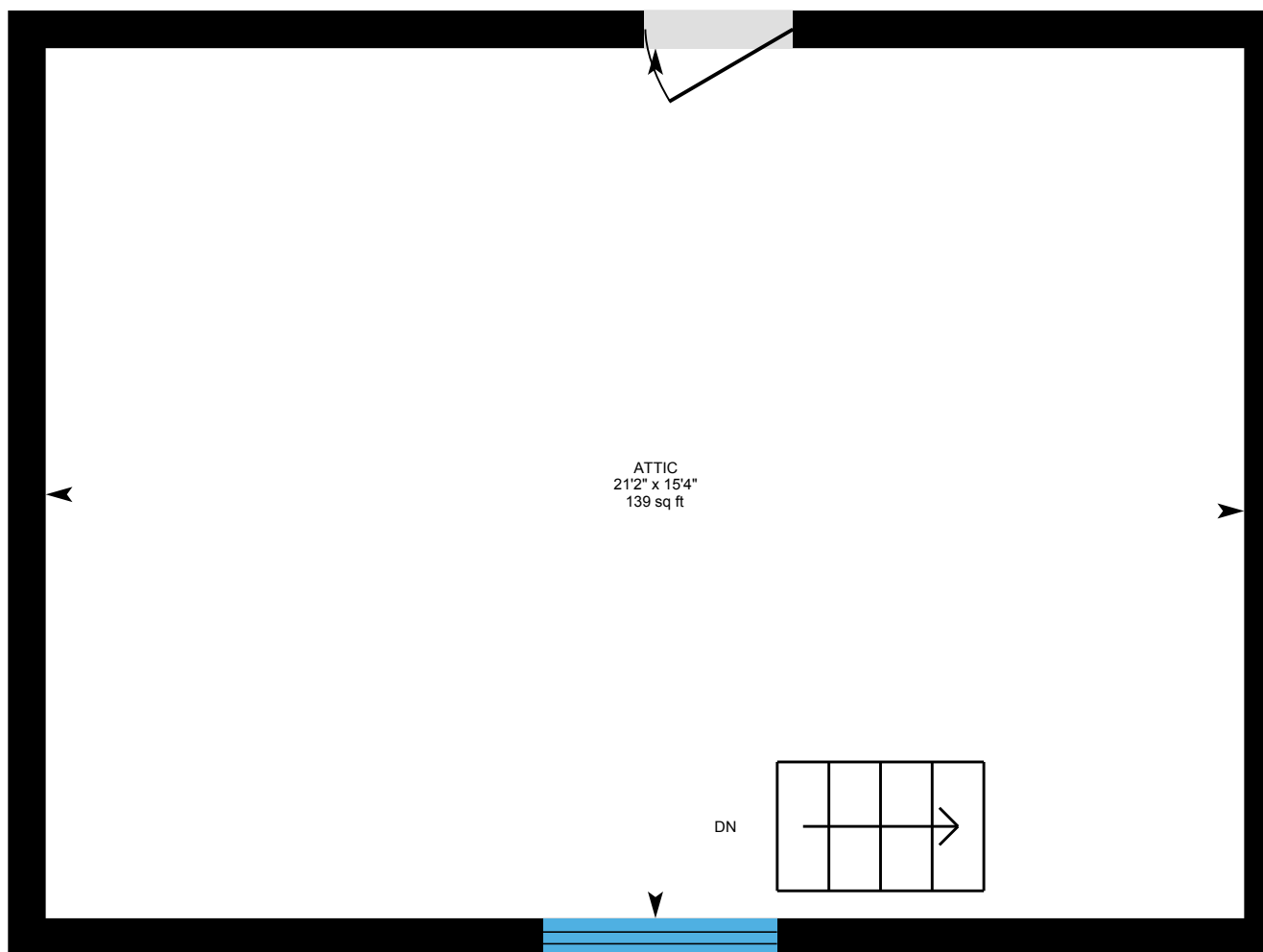


White regions are excluded from total floor area. All room dimensions and floor areas must be considered approximate and are subject to independent verification. For method of measurement please see <https://youriguide.com/measure/>.

iGUIDE

208697 ON-26, The Blue Mountains, ON

Garage bunky



0 2 4 ft

PREPARED: Nov, 2019



208697 ON-26, The Blue Mountains, ON

Property Details

Room Measurements

Only major rooms are listed. Some listed rooms may be excluded from total interior floor area (e.g. garage). Room dimensions are largest length and width; parts of room may be smaller. Room area is not always equal to product of length and width.

Main Building

1ST FLOOR

2pc Bath: 3'10" x 4'10" | 19 sq ft
Dining: 10'7" x 15'1" | 157 sq ft
Kitchen: 16'9" x 17'5" | 243 sq ft
Living: 15'1" x 18'8" | 283 sq ft

2ND FLOOR

3pc Ensuite: 6'2" x 6'10" | 36 sq ft
4pc Bath: 11' x 6'5" | 67 sq ft
Bedroom: 11' x 10'8" | 101 sq ft
Bedroom: 11'1" x 17'9" | 144 sq ft
Master: 16'1" x 17'1" | 183 sq ft

LOWER LEVEL

Bar: 11'6" x 7'10" | 90 sq ft
Bedroom: 9'11" x 10'3" | 94 sq ft
Laundry: 7'4" x 17'7" | 129 sq ft
Office: 8'5" x 13'3" | 111 sq ft
Rec Room: 14'4" x 10'3" | 146 sq ft
Storage: 8'5" x 3'11" | 33 sq ft

Floor Area Information

For explanation of floor area calculations and method of measurement please see <https://youriguide.com/measure/>. All displayed floor areas are rounded to nearest integer. Total area is computed before rounding and may not equal to sum of displayed floor areas.

Main Building

1ST FLOOR

Interior Area: 868 sq ft
Perimeter Wall Length: 132 ft
Perimeter Wall Thickness: 10.0 in
Exterior Area: 977 sq ft

2ND FLOOR

Interior Area: 739 sq ft
Perimeter Wall Length: 134 ft
Perimeter Wall Thickness: 10.0 in
Exterior Area: 850 sq ft

LOWER LEVEL (Below Grade)

Interior Area: 734 sq ft
Perimeter Wall Length: 125 ft
Perimeter Wall Thickness: 10.0 in
Exterior Area: 838 sq ft

208697 ON-26, The Blue Mountains, ON

Property Details

Room Measurements

Garage

BARN

Bar: 21'2" x 15'1" | 319 sq ft

Garage: 21'2" x 20'3" | 428 sq ft

Workshop: 21'2" x 14'2" | 300 sq ft

GARAGE BUNKY

Attic: 21'2" x 15'4" | 139 sq ft

Floor Area Information

Garage

BARN

All space is excluded

GARAGE BUNKY

All space is excluded

Total Above Grade Floor Area

Main Building Interior: 1607 sq ft

Main Building Exterior: 1828 sq ft