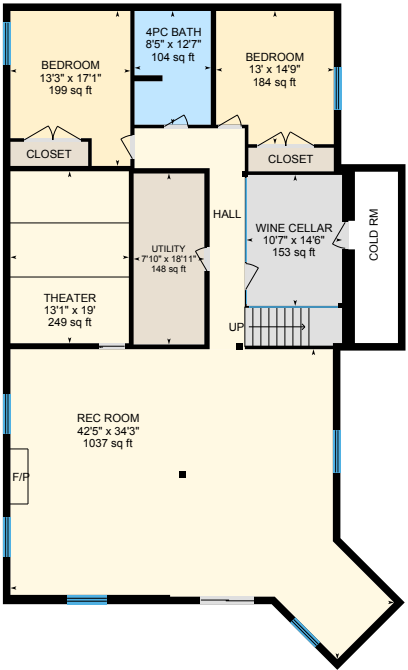
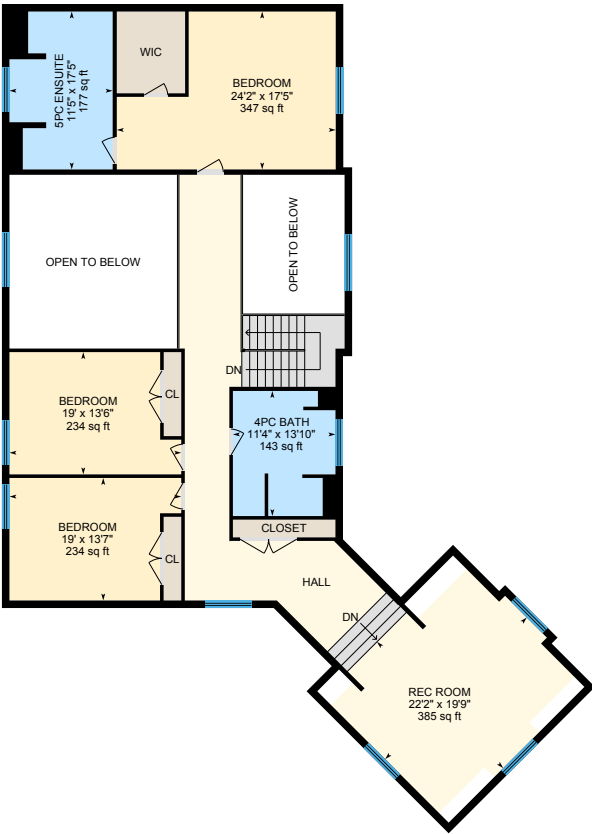
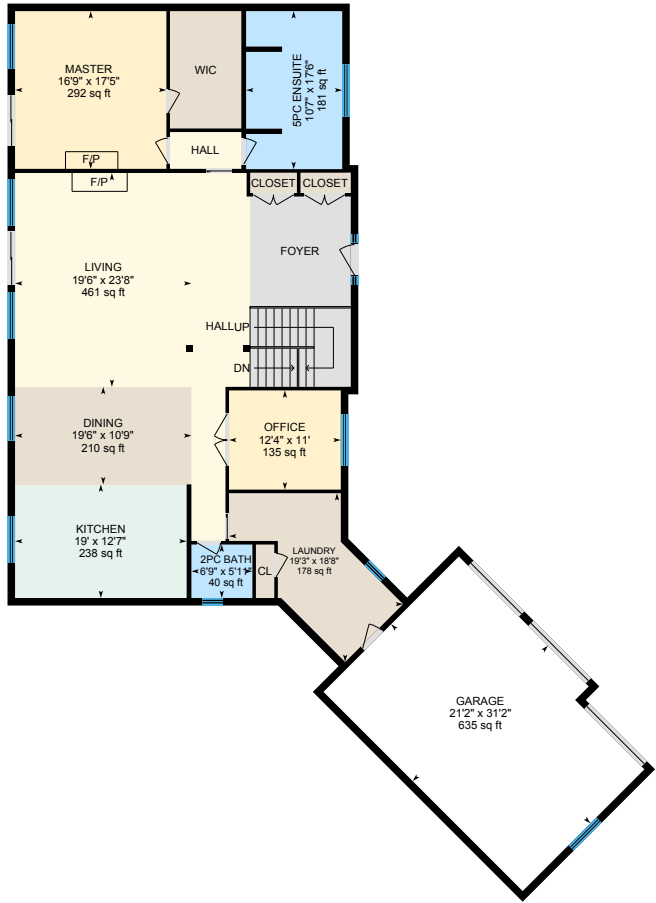


123 Blueski George Crescent, The Blue Mountains, ON

Main Building: Total Exterior Area Above Grade 5216 sq ft



0 9 18
ft



123 Blueski George Crescent, The Blue Mountains, ON

1st Floor Total Exterior Area 2698 sq ft
Total Interior Area 2439 sq ft



0 7 14
ft

PREPARED: Jan, 2020

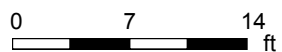


White regions are excluded from total floor area. All room dimensions and floor areas must be considered approximate and are subject to independent verification. For method of measurement please see <https://youriguide.com/measure/>.

iGUIDE

123 Blueski George Crescent, The Blue Mountains, ON

2nd Floor Total Exterior Area 2518 sq ft
Total Interior Area 2275 sq ft



PREPARED: Jan, 2020



White regions are excluded from total floor area. All room dimensions and floor areas must be considered approximate and are subject to independent verification. For method of measurement please see <https://youriguide.com/measure/>.

123 Blueski George Crescent, The Blue Mountains, ON

lower level Total Exterior Area 2610 sq ft
Total Interior Area 2415 sq ft



0 6 12 ft

PREPARED: Jan, 2020



White regions are excluded from total floor area. All room dimensions and floor areas must be considered approximate and are subject to independent verification. For method of measurement please see <https://youriguide.com/measure/>.

123 Blueski George Crescent, The Blue Mountains, ON

Property Details

Room Measurements

Only major rooms are listed. Some listed rooms may be excluded from total interior floor area (e.g. garage). Room dimensions are largest length and width; parts of room may be smaller. Room area is not always equal to product of length and width.

Main Building

1ST FLOOR

2pc Bath: 6'9" x 5'11" | 40 sq ft
5pc Ensuite: 10'7" x 17'6" | 181 sq ft
Dining: 19'6" x 10'9" | 210 sq ft
Garage: 21'2" x 31'2" | 635 sq ft
Kitchen: 19' x 12'7" | 238 sq ft
Laundry: 19'3" x 18'8" | 178 sq ft
Living: 19'6" x 23'8" | 461 sq ft
Master: 16'9" x 17'5" | 292 sq ft
Office: 12'4" x 11' | 135 sq ft

2ND FLOOR

4pc Bath: 11'4" x 13'10" | 143 sq ft
5pc Ensuite: 11'5" x 17'5" | 177 sq ft
Bedroom: 19' x 13'7" | 234 sq ft
Bedroom: 19' x 13'6" | 234 sq ft
Bedroom: 24'2" x 17'5" | 347 sq ft
Rec Room: 22'2" x 19'9" | 385 sq ft

LOWER LEVEL

4pc Bath: 8'5" x 12'7" | 104 sq ft
Bedroom: 13' x 14'9" | 184 sq ft
Bedroom: 13'3" x 17'1" | 199 sq ft
Rec Room: 42'5" x 34'3" | 1037 sq ft
Theater: 13'1" x 19' | 249 sq ft

Floor Area Information

For explanation of floor area calculations and method of measurement please see <https://youriguide.com/measure/>. All displayed floor areas are rounded to nearest integer. Total area is computed before rounding and may not equal to sum of displayed floor areas.

Main Building

1ST FLOOR

Interior Area: 2439 sq ft
Perimeter Wall Length: 311 ft
Perimeter Wall Thickness: 10.0 in
Exterior Area: 2698 sq ft

2ND FLOOR

Interior Area: 2275 sq ft
Perimeter Wall Length: 292 ft
Perimeter Wall Thickness: 10.0 in
Exterior Area: 2518 sq ft

LOWER LEVEL (Below Grade)

Interior Area: 2415 sq ft
Perimeter Wall Length: 234 ft
Perimeter Wall Thickness: 10.0 in
Exterior Area: 2610 sq ft

Total Above Grade Floor Area

Main Building Interior: 4714 sq ft
Main Building Exterior: 5216 sq ft

123 Blueski George Crescent, The Blue Mountains, ON

Property Details

Room Measurements

Utility: 7'10" x 18'11" | 148 sq ft
Wine Cellar: 10'7" x 14'6" | 153 sq ft

Floor Area Information