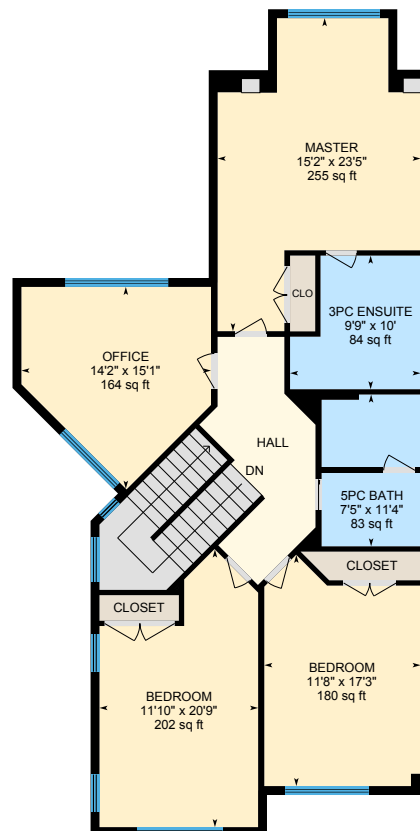


# 111 Georgian Bay Ln, The Blue Mountains, ON

Main Building: Total Exterior Area Above Grade 3279 sq ft



**1st Floor**  
Exterior Area 1904 sq ft



**2nd Floor**  
Exterior Area 1375 sq ft



**Lower (Below Grade)**  
Exterior Area 1905 sq ft



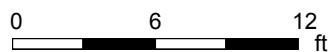
0 6 12  
ft

PREPARED: Jun, 2020

# 111 Georgian Bay Ln, The Blue Mountains, ON

1st Floor Total Exterior Area 1904 sq ft

Total Interior Area 1765 sq ft



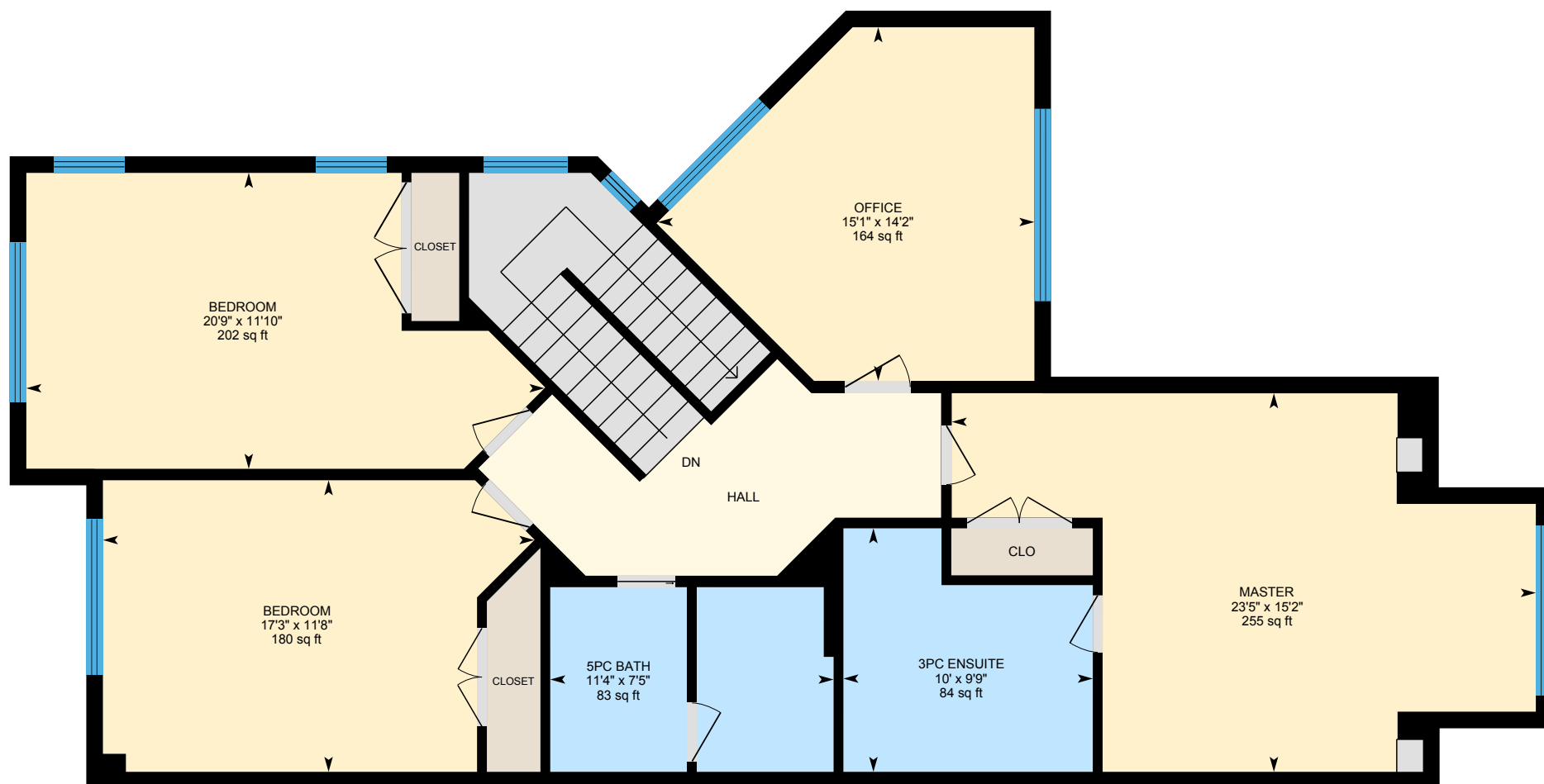
PREPARED: Jun, 2020



White regions are excluded from total floor area. All room dimensions and floor areas must be considered approximate and are subject to independent verification. For method of measurement please see <https://youriguide.com/measure/>.

# 111 Georgian Bay Ln, The Blue Mountains, ON

**2nd Floor** Total Exterior Area 1375 sq ft  
Total Interior Area 1254 sq ft



0 5 10  
ft

PREPARED: Jun, 2020



White regions are excluded from total floor area. All room dimensions and floor areas must be considered approximate and are subject to independent verification. For method of measurement please see <https://youriguide.com/measure/>.

iGUIDE

# 111 Georgian Bay Ln, The Blue Mountains, ON

**Lower** Total Exterior Area 1905 sq ft

Total Interior Area 1786 sq ft



0 4 8  
ft

PREPARED: Jun, 2020



White regions are excluded from total floor area. All room dimensions and floor areas must be considered approximate and are subject to independent verification. For method of measurement please see <https://youriguide.com/measure/>.

iGUIDE

# 111 Georgian Bay Ln, The Blue Mountains, ON

## Property Details

### Room Measurements

Only major rooms are listed. Some listed rooms may be excluded from total interior floor area (e.g. garage). Room dimensions are largest length and width; parts of room may be smaller. Room area is not always equal to product of length and width.

#### Main Building

##### 1ST FLOOR

2pc Bath: 5' x 5' | 25 sq ft  
5pc Ensuite: 14'4" x 11'7" | 136 sq ft  
Dining: 14'3" x 15'8" | 223 sq ft  
Garage: 24'1" x 29'3" | 635 sq ft  
Kitchen: 15'3" x 17'1" | 240 sq ft  
Laundry: 11'7" x 13'8" | 110 sq ft  
Living: 15'7" x 22' | 336 sq ft  
Master: 14'4" x 14'4" | 206 sq ft

##### 2ND FLOOR

3pc Ensuite: 9'9" x 10' | 84 sq ft  
5pc Bath: 7'5" x 11'4" | 83 sq ft  
Bedroom: 11'10" x 20'9" | 202 sq ft  
Bedroom: 11'8" x 17'3" | 180 sq ft  
Master: 15'2" x 23'5" | 255 sq ft  
Office: 14'2" x 15'1" | 164 sq ft

##### LOWER

3pc Bath: 8'7" x 12'2" | 86 sq ft  
Bedroom: 14'2" x 13'4" | 174 sq ft  
Gym: 18' x 19'9" | 256 sq ft  
Media Game Room: 29'6" x 22'7" | 590 sq ft  
Storage: 12'7" x 10'4" | 94 sq ft  
Utility: 7'7" x 10'6" | 80 sq ft  
Wine Cellar: 6'11" x 12'5" | 71 sq ft

### Floor Area Information

For explanation of floor area calculations and method of measurement please see <https://youriguide.com/measure/>. All displayed floor areas are rounded to nearest integer. Total area is computed before rounding and may not equal to sum of displayed floor areas.

#### Main Building

##### 1ST FLOOR

Interior Area: 1765 sq ft  
Excluded Area: 635 sq ft  
Perimeter Wall Length: 208 ft  
Perimeter Wall Thickness: 8.0 in  
Exterior Area: 1904 sq ft

##### 2ND FLOOR

Interior Area: 1254 sq ft  
Perimeter Wall Length: 182 ft  
Perimeter Wall Thickness: 8.0 in  
Exterior Area: 1375 sq ft

##### LOWER (Below Grade)

Interior Area: 1786 sq ft  
Perimeter Wall Length: 179 ft  
Perimeter Wall Thickness: 8.0 in  
Exterior Area: 1905 sq ft

#### Total Above Grade Floor Area

Main Building Interior: 3019 sq ft  
Main Building Excluded: 635 sq ft  
**Main Building Exterior: 3279 sq ft**