

PLAN OF SURVEY OF  
PART OF LOT 25  
CONCESSION 7  
(FORMERLY TOWNSHIP OF COLLINGWOOD)  
TOWN OF THE BLUE MOUNTAINS  
COUNTY OF GREY

SCALE 1:500  
0 2 4 6 8 10 20 METRES  
ZUBEK, EMO, PATTEN & THOMSEN LTD.  
2008

METRIC  
DISTANCES ON THIS PLAN ARE IN METRES AND CAN  
BE CONVERTED TO FEET BY DIVIDING BY 0.3048

PART 1 OF 4 PARTS  
SHEET 1 OF 1 SHEET

GREY VACANT LAND  
CONDOMINIUM PLAN No. 81

| INDEX OF PARTS |          |                                                                                      |
|----------------|----------|--------------------------------------------------------------------------------------|
| PART           | SHEET(S) | DESCRIPTION                                                                          |
| 1              | 1        | BOUNDARY SURVEY AND DESCRIPTION OF UNIT BOUNDARIES ON LEVEL 1                        |
| 2              | NIL      | DESCRIPTION OF BOUNDARIES OF EXCLUSIVE USE PORTIONS OF THE COMMON ELEMENT ON LEVEL 1 |
| 3              | NIL      | ARCHITECTURAL PLANS                                                                  |
| 4              | NIL      | STRUCTURAL PLANS                                                                     |

LEVEL 1  
UNITS 1 TO 7 INCLUSIVE  
REGISTERED IN THE LAND REGISTRY OFFICE FOR  
THE LAND TITLES DIVISION OF GREY (No. 16)  
AT 12:00 CLOCK ON THE 29<sup>th</sup> DAY OF September  
2008.

L. McConachie  
DEPUTY LAND REGISTRAR

SURVEYOR'S CERTIFICATE

I CERTIFY THAT:  
1. THIS SURVEY AND PLAN ARE CORRECT AND IN ACCORDANCE WITH THE CONDOMINIUM ACT, 1998, THE SURVEYS ACT, THE SURVEYORS ACT AND THE LAND TITLES ACT AND THE REGULATIONS MADE UNDER THEM.  
2. THE SURVEY WAS COMPLETED ON THE 23<sup>RD</sup> DAY OF SEPTEMBER 2008.

SEPTEMBER 23, 2008  
LYNN H. PATTEN  
ONTARIO LAND SURVEYOR  
COLLINGWOOD

DECLARATION REGISTERED AS No. 671068

THIS PLAN COMPRISES PART OF PIN 37144-0219 (LT) 37308-0046

SCHEDULE OF APPURTENANT AND SERVIENT INTERESTS (PURSUANT TO CLAUSES 157(1)(D) AND (E) OF THE CONDOMINIUM ACT, 1998)

| TOGETHER WITH APPURTENANT INTERESTS | PART/BLOCK                     | PLAN     | DESCRIBED IN | NOTES     |
|-------------------------------------|--------------------------------|----------|--------------|-----------|
|                                     | 30,31,32,33,34 & 35            | 16R-8788 | R5 188 10    |           |
|                                     | 7                              | 16R-8505 | R5 188 10    |           |
|                                     | 13, 16 & 19                    | 16R-8788 | LT509        |           |
|                                     | 2, 13, 14, 15, 16, 17, 18 & 19 | 16R-8788 | LT512        | ALL UNITS |
| SUBJECT TO SERVIENT INTERESTS       | 4                              | 16R-9371 | R5 18822     |           |

NOTES

BEARINGS HEREON ARE ASTRONOMIC AND ARE REFERRED TO THE BEARING OF THE SOUTHERLY LIMIT OF GREY COMMON ELEMENTS CONDOMINIUM PLAN No. 67 BEING N73°14'35"E IN ACCORDANCE THEREWITH.

- ⊕ DENOTES SET
- ⊙ DENOTES FOUND
- ⊕ S.S.I.B. DENOTES STANDARD IRON BAR
- ⊕ I.B. DENOTES IRON BAR
- ⊕ S.S.I.B. DENOTES SHORT STANDARD IRON BAR
- ⊕ C.C. DENOTES CUT CROSS

MONUMENTS CONTROLLING THE EXTENT AND LOCATION OF THE UNITS ARE THE IRON BARS SHOWN HEREON AND MORE PARTICULARLY DESCRIBED IN SCHEDULE C OF THE DECLARATION

— DENOTES BOUNDARIES OF THE UNITS AND THE COMMON ELEMENTS

CERTIFICATE OF DECLARANT

THIS IS TO CERTIFY THAT THE PROPERTY INCLUDED IN THIS PLAN HAS BEEN LAID OUT INTO UNITS AND COMMON ELEMENTS IN ACCORDANCE WITH MY INSTRUCTIONS.

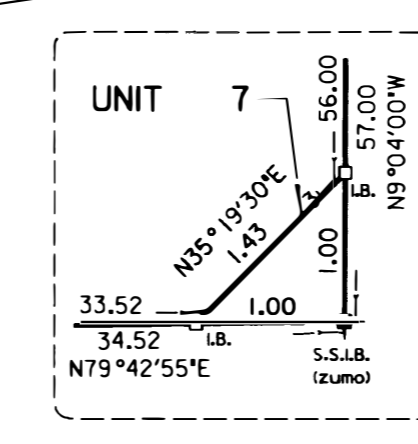
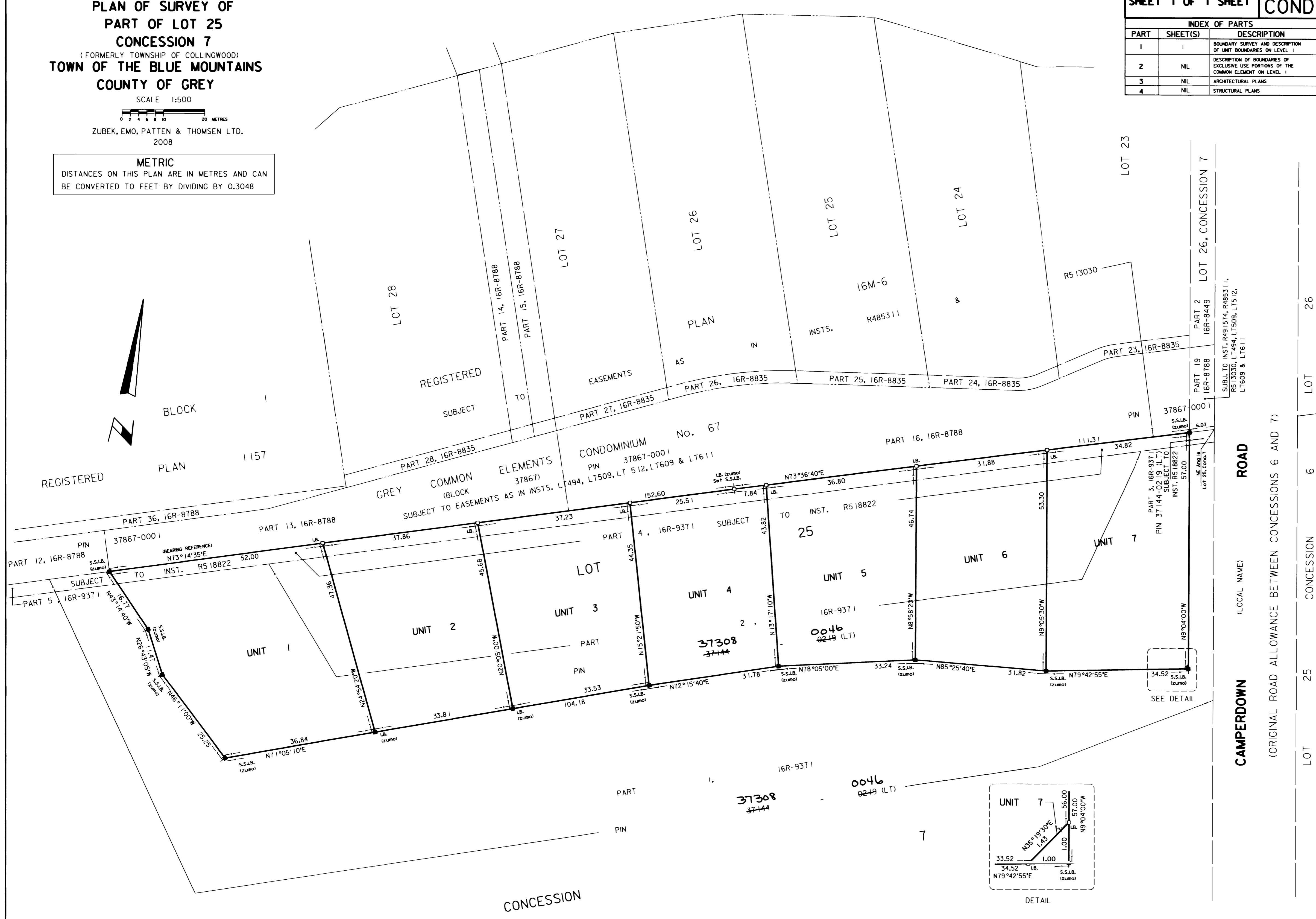
DATED AT COLLINGWOOD  
THIS 24<sup>th</sup> DAY OF SEPTEMBER 2008  
DECLARANT: RIDGE ESTATES LAND CORPORATION

PER *Russell Allan*  
RUSSELL ALLAN  
DIRECTOR  
I HAVE THE AUTHORITY TO BIND THIS CORPORATION

THIS FINAL PLAN OF CONDOMINIUM IS APPROVED BY THE COUNTY OF GREY UNDER SECTION 5(158) OF THE PLANNING ACT, R.S.O. 1990 AS AMENDED.

THIS 25<sup>th</sup> DAY OF SEPTEMBER, 2008

*Laurel McDonald*  
DIRECTOR OF PLANNING



ZUBEK, EMO  
PATTEN  
&  
THOMSEN  
LIMITED  
ONTARIO LAND SURVEYORS  
39 STEWART ROAD  
COLLINGWOOD, ONTARIO L9Y 4M7  
PHONE: (705) 445-4910 FAX: (705) 445-5866  
JOB No. 74-89-12 SURVEY FOR: RIDGE ESTATES LAND CORP.