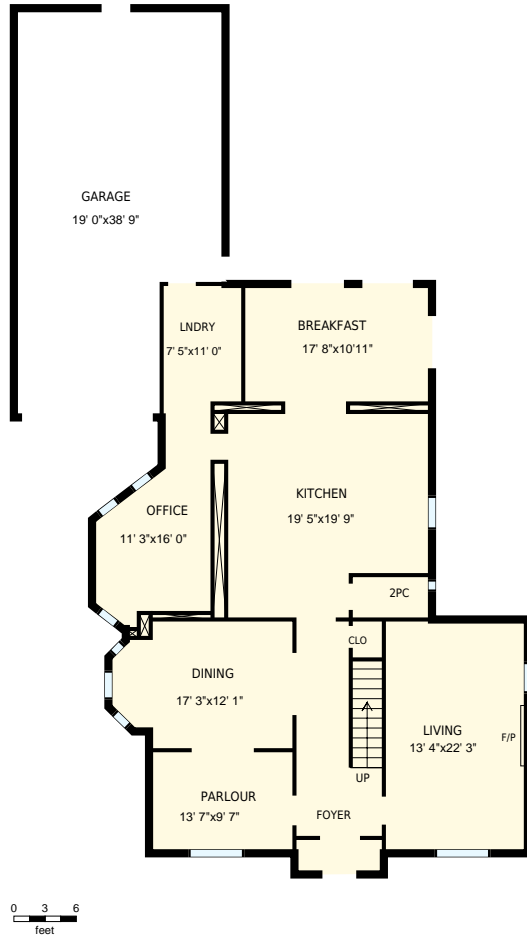


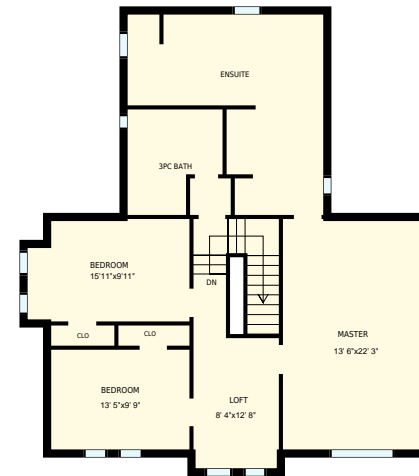


240 Maple St, Collingwood, ON

Total Exterior Area Above Grade 3306 sq ft



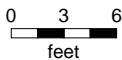
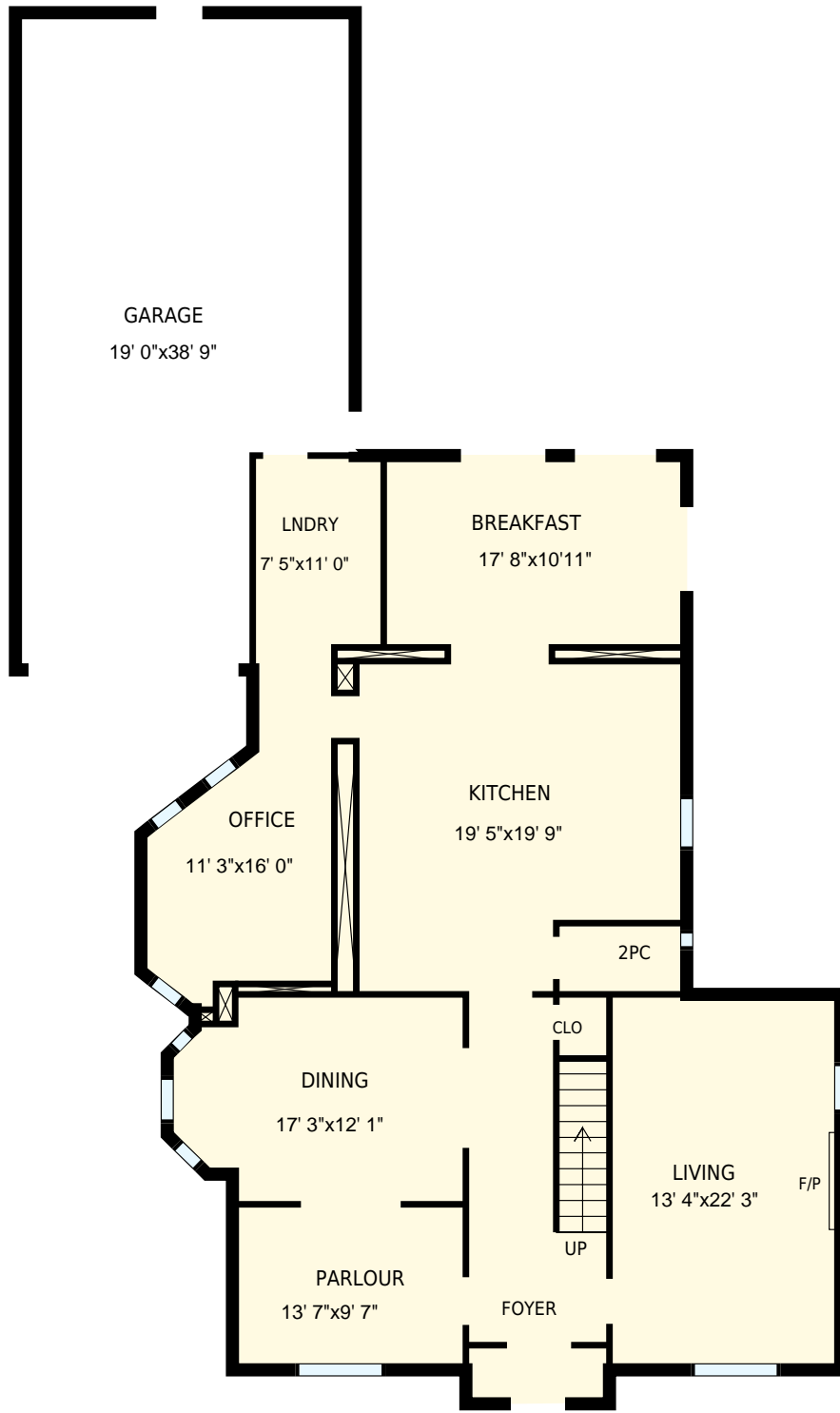
Main Floor
Exterior Area 1916 sq ft



2nd Floor
Exterior Area 1390 sq ft

White regions are excluded from total floor area. All room dimensions and floor areas must be considered approximate and are subject to independent verification. For method of measurement please see <https://youriguide.com/measure/>.

PREPARED FOR: Giovanni Boni
Sales Representative
Royal LePage Locations North Brokerage

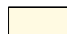


240 Maple St, Collingwood, ON

PREPARED FOR:
Giovanni Boni
Sales Representative
Royal LePage Locations North Brokerage

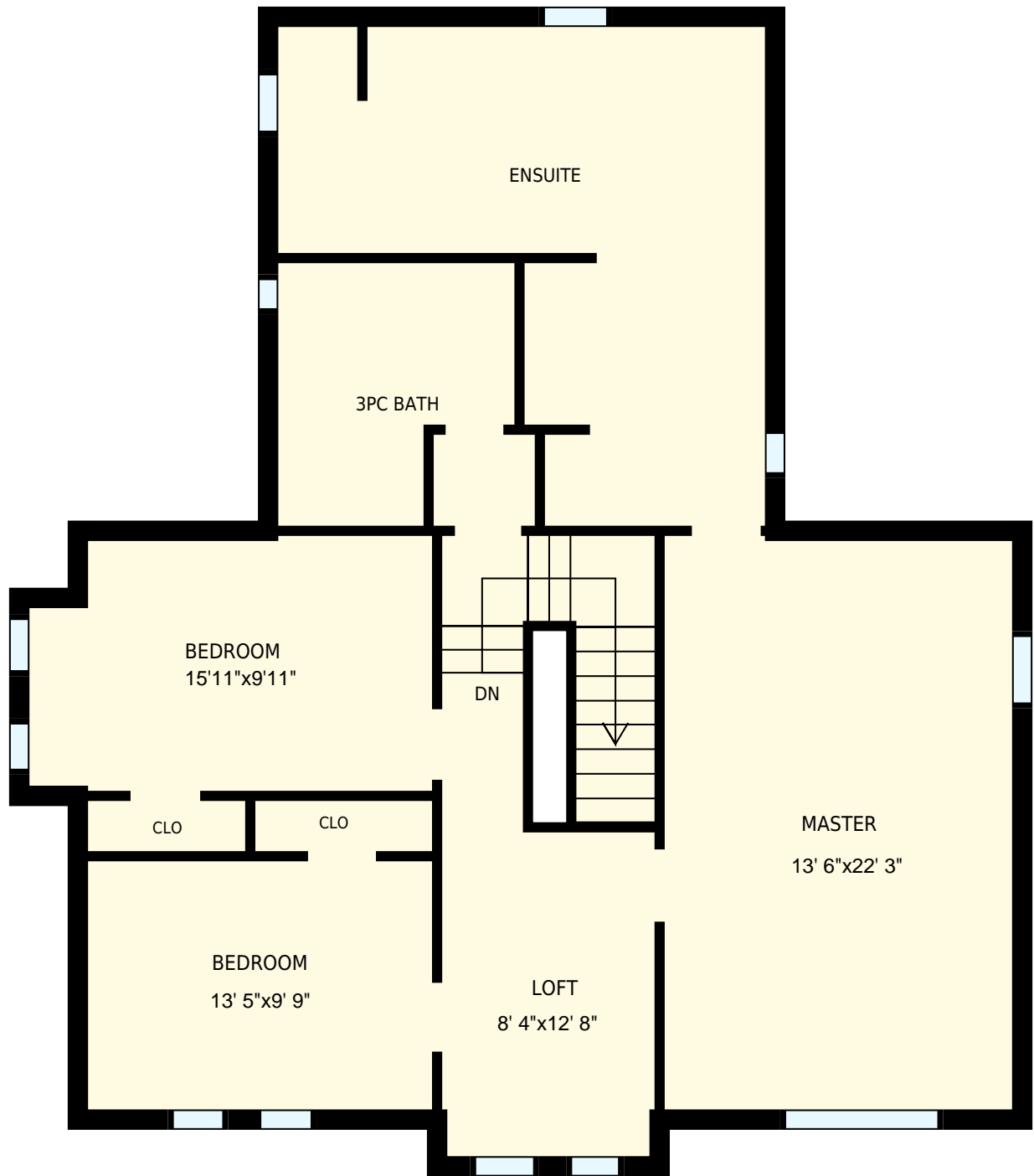
Main Floor

Interior Area 1758 sq ft
Exterior Area 1916 sq ft

 Included Area

PREPARED:
Sep, 2017

White regions are excluded from total floor area. All room dimensions and floor areas must be considered approximate and are subject to independent verification. For method of measurement please see <https://youriguide.com/measure/>.



240 Maple St, Collingwood, ON

2nd Floor

PREPARED FOR:
Giovanni Boni
Sales Representative
Royal LePage Locations North Brokerage

Interior Area 1211 sq ft
Exterior Area 1390 sq ft



PREPARED:
Sep, 2017

White regions are excluded from total floor area. All room dimensions and floor areas must be considered approximate and are subject to independent verification. For method of measurement please see <https://youriguide.com/measure/>.