

TOWN (GEOGRAPHIC) LOT 37, CONCESSION 12 OF COLLINGWOOD

THE BLUE MO



BLOCK 8, PLAN 16M-8
PIN 37130-0149(LT)

SUBJECT TO AN EASEMENT AS SET OUT IN INSTRUMENT No.'s R95038, R69634, R94470, R100294, R99609, R95108, R20580, R20579, R20552, R20550, R53465, R71719, R20698, R67072, R63354, R20494, R20761, R67155, R55615, R20437, R20416, R20378, R20409, R97475, R97476 AND R110752.

REMAINDER OF PART 2, PLAN 16R-644
INSTRUMENT No. 503622

PART 2, PLAN 16R-8694

DESIGNATED AS CONTROLLED-ACCESS HIGHWAY
BY ORDER-IN-COUNCIL O.C. 113/89, EFFECTIVE
JANUARY 12th, 1989, AND REGISTERED AS
INSTRUMENT No. 273816 PLAN (P-1671-141)

THE KING'S HIGHWAY No. 26

LOT 37, CONCESSION 11
INSTRUMENT No. 104119

REMAINDER OF PART 1, PLAN 16R-3743
INSTRUMENT No. 280281

REMAINDER OF PART 2, PLAN 16R-3743
INSTRUMENT No. 537005

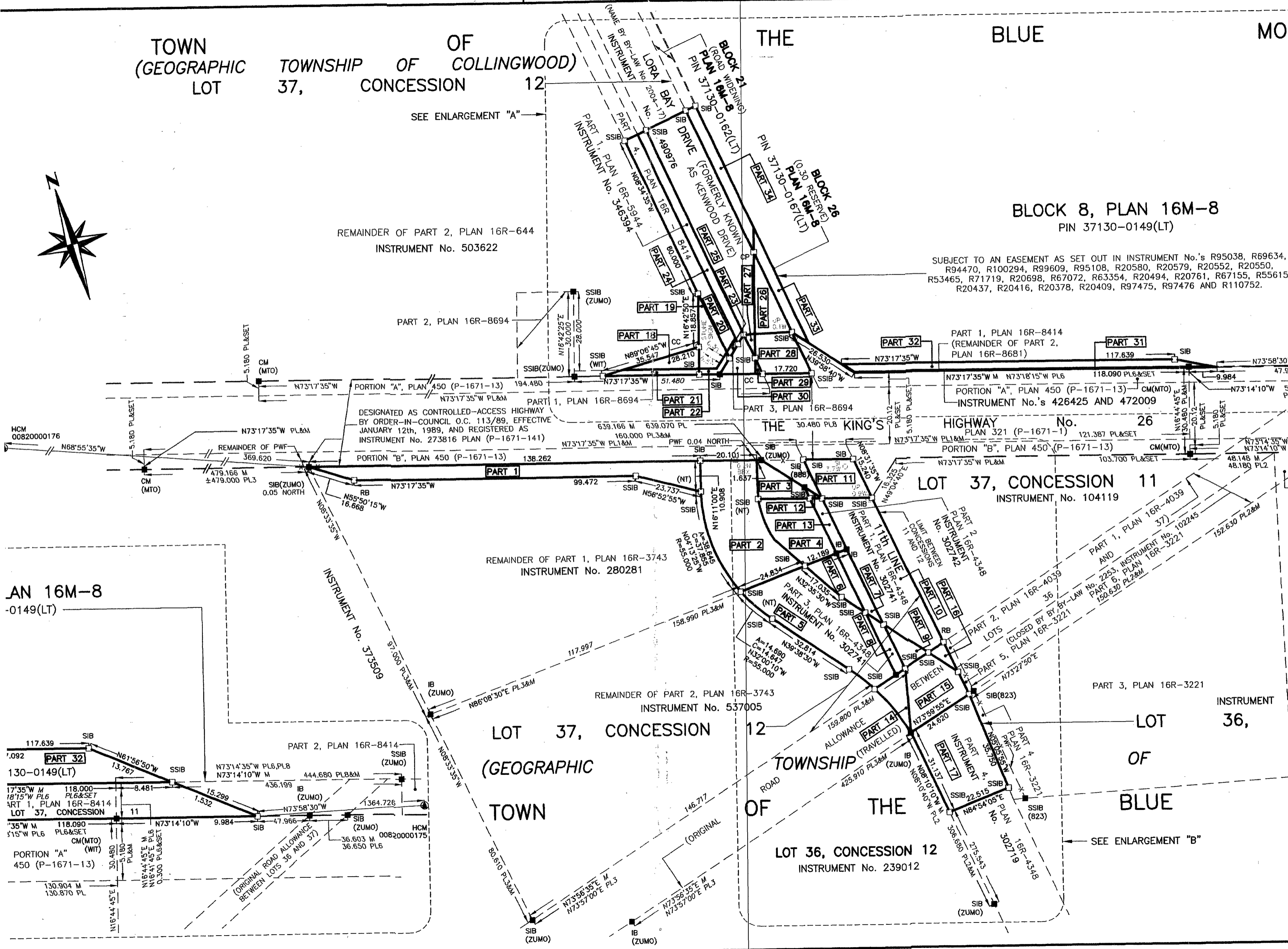
LOT 37, CONCESSION 12
(GEOGRAPHIC) TOWN

LOT 36, CONCESSION 12
INSTRUMENT No. 239012

LOT 36,
OF
THE BLUE

PLAN 16M-8
-0149(LT)

PART 32
130-0149(LT)
PART 1, PLAN 16R-8414
LOT 37, CONCESSION 11
PORTION "A",
450 (P-1671-13)



SEE ENLARGEMENT "B"